

Install a new hose on the reel: Continued

2. Replace the original cable tie just back from the barb with a new one as this secures the hose attachment from unnecessary stress during full extension. Fig.15
3. Carefully let the hose rewind over the drum, helping if necessary by gently pushing down on the foot pedal. Fig.16
4. When the new hose is wound over the drum, remove the hose-stop ball from the old hose and install on the new hose approximately 1m from the end of the hose Fig.17.
5. Reattach a hose connector and trigger gun. (Fig.18) – *the installation is now complete!*



Fig.15



Fig.16



Fig.17



Fig.18

SPECIFICATIONS

Model	701078
Hose Length	30m
Type of Hose	PVC
Working Pressure	150psi
I.D of Hose	12mm
Material of Outer Casing	PP
Size of Inlet and Outlet	12mm



GUARANTEE

Cyclone Tools Pty Ltd guarantees the Hose Reel and Hose Fittings for 2 years and the Hose for 12 years from the date of purchase.

If the relevant product proves defective as to materials or workmanship within that period, Cyclone Tools Pty Ltd will, at its option either replace or refund the purchase price for the relevant product. In the event of such a defect, the product should be returned to the place of purchase, together with proof of purchase, for replacement or refund. Any handling and transportation and other expenses incurred in claiming under this warranty) are not covered by this warranty and will not be borne by Cyclone Tools Pty Ltd.

Our goods come with guarantees that cannot be excluded under the Australian Consumer Law. You are entitled to a replacement or refund for a major failure and for compensation for any other reasonably foreseeable loss or damage. You are also entitled to have the goods repaired or replaced if goods fail to be of acceptable quality and the failure does not amount to a major failure. The benefits given by this guarantee are in addition to other rights and remedies which may be available to the consumer under

Made in China to strict Nylex quality standards.

www.cyclone.com.au

Cyclone Tools Pty Ltd 317 Abbotts Road, P.O. Box 4339 Dandenong South, Victoria 3175, Australia.
The Nylex brand is licensed to Cyclone Tools Pty Ltd by Wet Technologies Pty Ltd.



30m
12mm dia. HOSE

2YR/12YR
REEL 2 YRS HOSE 12 YRS
GUARANTEE

FOOT PEDAL HOSE REEL
Owner's Manual - 701078



Effortless Foot Pedal Retraction

FOOT PEDAL HOSE REEL OWNER'S MANUAL - 701078

1. INTRODUCTION

The Nylex Foot Pedal Hose Reel is ideal for neatly storing and protecting your hose from the harsh Australian sun. The unit has been designed for maximum mobility and can be moved to any part of your garden, front or rear, as long as you have access to a tap.

The hose can be easily pulled out, extracting as much hose as you need and can be just as easily retracted by pumping the convenient foot pedal.

2. PARTS LIST

- A. 1 Foot Pedal Hose Reel Unit.
- B. 2 Wheels
- C. 1 Inlet Hose 2M (6.56ft) with Connectors
- D. 1 Trigger gun
- E. 1 Foot pedal hose reel stand

3. INSTALLATION

1. Install the wheels to each side of the hose reel by placing the wheel on the wheel axle, inserting the washer and locking pin and then placing the cover on the wheel. Fig. 2
2. Attach the foot pedal hose reel stand to the unit by inserting the two (2) metal poles into the plastic cover near the bottom of the unit. Fig. 3
3. Install the Tap to Reel inlet hose on the body of reel.

4. HOW TO USE THE REEL

1. Unfold the handle by lifting it upwards until the locking button pops out. Fig.4 a & b
2. To lower the handle for storage, depress the locking button on each side of the reel and tilt the handle forward again. Fig.5
3. When moving the hose reel, pull it toward or behind you - don't push it forward. Fig. 6
4. The trigger gun is located on the unit as shown. Fig.7 (opposite page)
5. To pull out the hose, grasp the hose stop and remove as much hose as needed by pulling at an even speed. When you have removed as much hose as you need, it will self-lock. Fig.8
6. To retract the hose, stand at the rear and holding the handle, use your foot to depress the pedal repeatedly. Using a longer pedal motion each time is more efficient. Fig.9

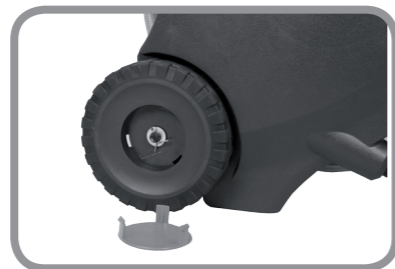


Fig.2



Fig.3



Fig.4a



Fig.4b



Fig.5



Fig.6



Fig.8



Fig.9

5. WHEN USING THE HOSE REEL PLEASE NOTE THE FOLLOWING:

1. Place on a level surface when operating the unit.
2. Do not operate the foot pedal when pulling out the hose – this will cause damage to the mechanism.
3. When pulling the hose out, slow down toward the end to avoid damage to the connection point.
4. When rewinding the hose, first bring the trigger gun end of the hose up toward the unit to avoid damage to the trigger gun by dragging it along the ground - this will also make retraction an easier process.
5. When using the foot pedal to retract the hose, reduce foot pedal force toward the end of retraction to avoid strain on the trigger gun connection.
6. Every so often, completely pull out all 30 meters of hose, release any kinks or twists and then gently retract the hose again

6. MAINTENANCE

1. When not in use, turn off the water at the tap and squeeze the nozzle trigger to release the water pressure.
2. Do not use the hose or unit to transmit anything other than water (chemicals or solvents for example).
3. When not in use for long periods of time, it is advisable to store your reel out of the weather.

7. ELIMINATING THE POSSIBILITY OF HOSE REEL MALFUNCTION

1. In the process of retracing the hose, if the hose locks, go to the front of the unit and gently pull out some hose to unlock the mechanism.
2. If the hose locks during the process of pulling it out, go to the rear and gently depress the foot pedal to unlock the mechanism.

8. INSTRUCTIONS FOR REPLACING THE HOSE

Remove the existing hose from the reel:

1. Unfold the handle.
2. To remove the original hose, pull it from the reel using one hand to steady the unit and the other hand to pull on the hose Fig.10.
3. Using protective gloves, hold one side of the reel drum to avoid it winding, cut and remove the plastic cable tie, unscrew the hose clamp and gently remove the hose from the plastic barb. If difficult to remove, simply slice the last 50mm of the hose with a sharp blade in a lengthwise direction. Fig.11.

Note: By pulling out the original hose, the spring in the hose drum will want to rewind. To avoid injury, wear gloves when holding the reel. Fig. 10 & 11

Install a new hose on the reel (Max. capacity 30m):

1. Remove the old hose taking note how it enters the body through the front orifice. Fig.12. Thread your new hose up to the drum. Slip the original hose clip over the end of the new hose and push the end of the hose onto the drum barb and tighten. Fig.13 & 14.

Continued following page.



Fig.7



Fig.10



Fig.11



Fig.12



Fig.13



Fig.14