



Rainwater Tanks

EDITION 5 DECEMBER 2008

From the Outback to Out the Back,
we've been REthinking water.



Rainwater Tanks

We re REthinking water... because it's *our* future

The result is a range of rainwater tanks and accessories designed to economically capture, store and direct available water, ensuring not only additional supply but reducing demand on precious community resources.

With the drought continuing and water restrictions becoming a way of life, the need to capture every drop of rainwater has never been more important.

Nylex is committed to REthinking water solutions through good design and quality production methods and is one of the first manufacturers in Australia to receive two individual globally-recognised standards.

As testimony to this commitment to meet and maintain world standards for quality, continuous improvement and customer satisfaction, Nylex sites in Australia, manufacturing polyethylene water storage tanks, have been granted AS/NZS 4766:2006 and ISO9001:2000.

With a 15 year warranty on all above ground tanks and a 10 year warranty on underground tanks, you can rely on Nylex products to serve you well for many years to come.

What does certification mean to you?

Certification to the recognised world standard guarantees that when you take delivery of any Nylex tank, you know it has undergone a rigorous specification process during design and manufacture. Architects, builders, developers and plumbers demand it.

This specification process includes initial design, holding capacity, wall and floor thicknesses, structural soundness right through to the quality of materials and fittings used.

Some companies claim they manufacture to the standard but are not actually certified. So when considering purchasing a tank, demand to see the manufacturer's certification number - it's your guarantee of quality.

Why should I buy a Nylex tank?

With a wide range of tanks, starting with the compact Nylex 330 litre RainSaver all the way up to the massive 45,400 litre tank*, Nylex offers a choice of sizes and contemporary colours to suit your needs, whether it be for a backyard, a farm, a factory, or a sports ground.

Each Nylex rainwater tank is:

- Designed and built in Australia for tough Australian conditions and certified to AS/NZS4766:2006 and ISO9001:2000
- Manufactured using chemically inert, virgin, food grade polyethylene ensuring water quality for the lifetime of the tank
- UV stabilised and will not rot, rust or corrode
- Made from a single, seam-free mould with no joins or other potential leakage points
- Supplied with a 15 year warranty on all above-ground tanks
- Supplied with a 10 year warranty on DownUnderground tanks
- Recyclable - which means it can be reused again in the manufacture of a wide variety of products
- Fitted with a standard overflow, strainer and brass outlet for easy connection
- Available in a full range of contemporary colours that never need painting
- Fitted with mosquito-proof mesh filters on all inlets and overflows
- Designed with built-in lifting lugs or hand grips depending on the model.

*Refer to the tank chart for availability by state.



How big should my Nylex tank be?

It really depends on what you want to use the tank for and how much space you have for a tank. As a rule of thumb, choose the largest tank for the space available. If you are planning to put it by the side of the house or in a small backyard, a Nylex Slimline tank may be more suitable.

Measure the available width, length and height of the space and make sure the tank will not obstruct doorways, windows, eaves, external air conditioners, tree trunks or other obstacles.

Once you have calculated the available area, use the tank chart on the next page to select the right Nylex tank for your needs.



➤ 22,700L



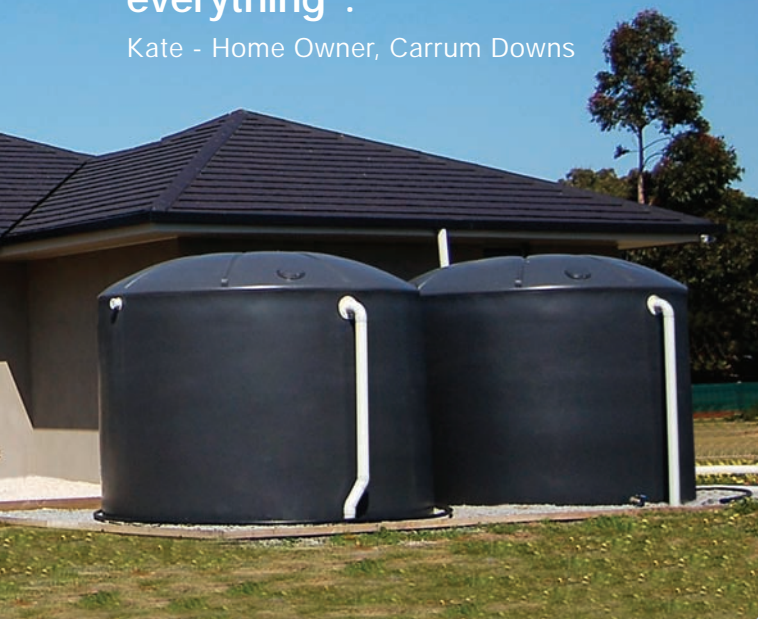
➤ 5,000L DownUnda



➤ SLR2000

We aren't connected to mains water so we use them for everything .

Kate - Home Owner, Carrum Downs



How much water can I collect from my roof?

The amount of rainwater you can collect is dependant on three critical factors:

- Average annual rainfall for your location - The Bureau of Meteorology website www.bom.gov.au/climate/averages is a great place to find the annual rainfall for your area
- The roof surface area supplying rainwater to your tank - Measuring the external dimensions of your home will give you a reasonable approximation
- The number of down pipes connected to your tank - and the percentage of roof area they will deliver.

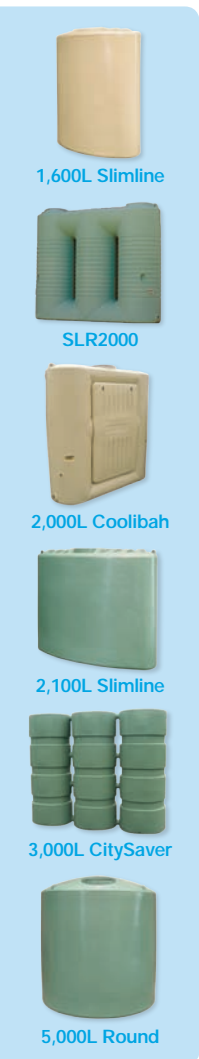
The formula to bear in mind when calculating how much water you can collect is this;

One millimetre of rain falling on one square metre of roof (1m x 1m) will collect one litre of water.

Remember, you don't need to purchase a tank with a capacity equivalent to the total annual rainfall as you will gain the most benefit from your tank by constantly using the water and topping it up when it rains.

Without these tanks we would be in a lot of trouble and so would the community we protect .

Stephen Cameron -
Captain, Cockatoo CFA

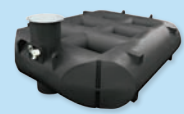


Tank Capacity	Tank Type	Length (mm)	Dia Width (mm)	Inlet Height (mm)	Tank Height (mm)	Over ow Size (mm)	Outlet Size (mm)	Tank Availability			
								VIC	NSW	SE QLD	CENTRAL QLD
NYLEX SMALL TANKS - Limited space, ideal for small inner city gardens and vegetable patches											
330L	Slimline	1000	400	1050	1050	2 x 50	2 x 20				
600L	Slimline	1220	620	1220	1260	2 x 50	2 x 20				
900L	Round		810	2100	2100	50	20				
1,000L	Round		1150	1250	1250	50	20				
1,000L	Round		1130	1250	1300	50	20				
1,100L	Slimline	1220	620	1960	2000	90	20 & 25				
1,600L	Slimline	1500	800	1960	2000	90	20 & 25				
NYLEX MEDIUM TANKS - Suburban homes with established gardens and connection to the home											
2,000L	Coolibah Plus*	2000	699	2070	2070	90	2 x 20				
2,000L	SLR2000	2265	685		1905	90	2 x 20				
2,000L	CitySaver	1780	725	2150	2150	90	20 & 50				
2,100L	Slimline	2060	810	1670	1710	90	20 & 25				
2,250L	Round		1500	1730	1800	90	25				
2,250L	Round		1500	1650	1650	90	25				
2,500L	CitySaver	2800	800	1750	1750	90	20 & 25				
3,000L	CitySaver	2700	725	2150	2150	90	20 & 50				
3,000L	SLR3000	3010	700	2063	2050	90	20 & 50				<i>Check with your stockist**</i>
3,420L	Round (Ribbed)		1750	1800	1850	90	20 & 50				
4,500L	Round		1840	2000	2100	90	40 BTO				
4,730L	Round (Ribbed)		1750	2370	2410	90	20 & 50				
5,000L	Round		2000	2000	2100	90	40 BTO				

* Coolibah Plus available as a stand alone tank or complete with inbuilt pump and control unit. ** Available early 2009. BTO = Brass Tank Outlet.



Tank Capacity	Tank Type	Length (mm)	Dia Width (mm)	Inlet Height (mm)	Tank Height (mm)	Over ow Size (mm)	Outlet Size (mm)	Tank Availability			
								VIC	NSW	SE QLD	CENTRAL QLD
NYLEX MEDIUM TANKS cont. - Suburban homes with established gardens and connection to the home											
5,000L	Squat		2360	1520	1670	90	40				
5,000L	DownUnda	2800	3500	750 Body	800	90	32				
5,470L	Round (Ribbed)		2160	1760	1850	90	50				
6,840L	Round (Ribbed)		2160	2140	2200	90	50				
8,200L	Round (Ribbed)		2160	2420	2580	90	50				
NYLEX LARGE TANKS - Outer suburban homes, small farms and properties with space for a larger tank											
9,000L	Round		2400	2200	2400	90	40 BTO				
9,775L	Round (Ribbed)		2810	1740	1820	90	50				
10,000L	Round		2700	2025	2350	90	40 BTO				
13,500L	Round		2950	2100	2590	90	40 BTO				
13,500L	Round		2900	2380	2700	90	40 BTO				
14,300	Round (Ribbed)		2810	2370	2620	90	50				
18,000L	Round		3500	1970	2400	90	40 BTO				
22,700L	Round		3500	2500	3000	90	40 BTO				
22,700L	Round (Ribbed)		3600	2370	2620	90	50				
27,200L	Round (Ribbed)		3600	2790	3040	90	50				
NYLEX EXTRA LARGE TANKS - Rural areas, sports grounds and industrial applications											
30,000L	Round		4120	2390	2950	90	40 BTO				
35,000L	Round		3500	3800	4200	90	50				
45,400L	Round		4400	3000	3500	90	40 BTO				



5,000L DownUnda



5,000L Squat



9,000L Round



22,700L Round



27,200L Ribbed

Details contained in this chart are accurate at the time of publication and should be used as a guide only. Actual tanks and their availability may vary as new tanks are added to the range and older models deleted.



We chose Nylex rainwater tanks to blend in with our extensive landscaped gardens and to conserve our heritage listed trees .

Rob Perry - Manager AVEO Edrington Park Retirement Village

How do I install my Nylex tank?



Once you have decided on the right tank for your needs, you can take a lot of the stress away from setting it up with a bit of planning and the answers to some simple questions. For example:

1. What type of base your tank will sit on e.g.; concrete, sand or on a stand?
2. How are you going to connect it to the roof e.g.; how many down pipes will supply the tank, types of filters, first flush devices etc.?
3. How are you going to deal with the overflow e.g.; connection to the storm water drain?
4. What sort of attachments (pumps, hoses etc.) will you be connecting to your tank for use?

Your Nylex dealer or local plumber are good sources of information and can also help out with the project. In fact

Nylex recommend your tank is installed by a suitably qualified plumber. This ensures the work complies with the relevant building regulations and that you are eligible for any Government water rebates applicable to your location.

IN ADDITION:

- The site must be level and free of rocks, stones and sharp objects
- The tank should not be buried more than one third of its wall height
- Ensure that the tank base is at least 600mm larger in diameter than the tank
- Rainwater tanks can be positioned on a number of different bases:
 - **Concrete Base (preferred):** A minimum 100mm, level and smooth finished concrete slab will provide an excellent base
 - **Sand Base:** A 75-100mm bed of level packing sand can be used as a base for your tank. The sand will need to be well compacted and contained to avoid any under tank erosion from wind, water, burrowing animals etc..
 - **Tank Stand:** The tank can only be mounted on a stand that has been certified as capable of supporting the weight of the tank when full - all Nylex tank stands are certified. The site must include an appropriate foundation and you may require building approval for tank stands over 1,000L
- A length of flexible pipe (at least 300mm long) should be installed after the ball or gate valve to absorb any shocks or movement generated by the delivery system
- Make sure all pipes are well supported and do not depend on the tank for support
- To avoid undermining the base, the tank overflow should be run well away from the tank
- Inlet and overflow pipes should be of the same diameter to prevent water overflowing through the strainer.

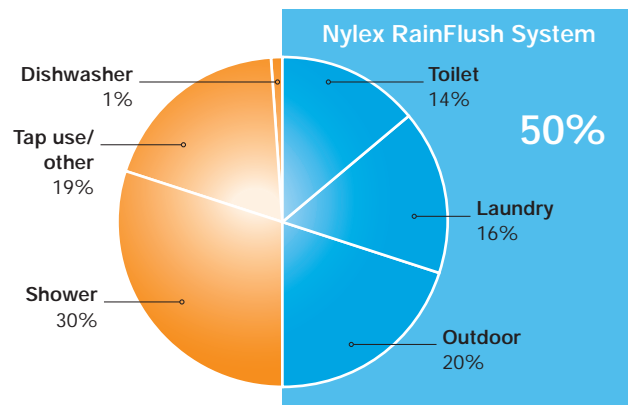
Rainwater use in the home

A Nylex RainFlush tank-to-house system, properly installed, can replace up to 50% of mains water with rainwater from your Nylex tank plumbed to the toilet and laundry.

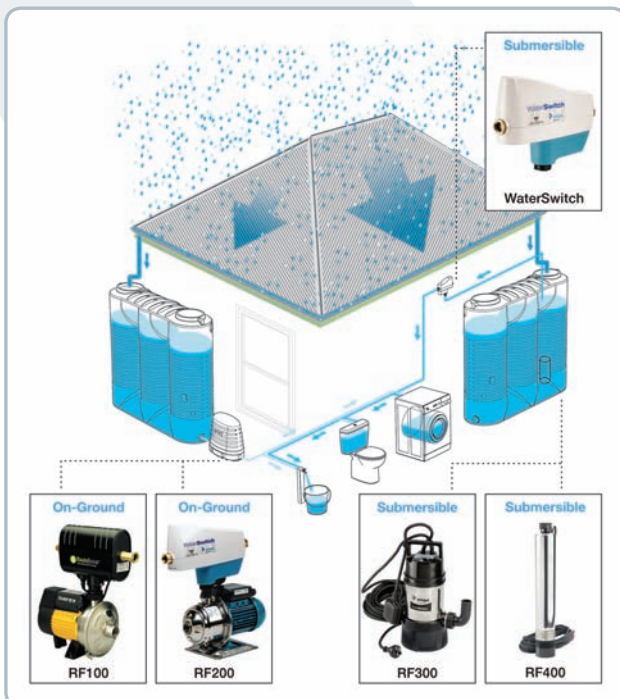
It does this by switching between tank water and mains water depending on availability - if there isn't any tank water available it will switch instantly to the mains water supply (also during a power failure).

Nylex have a range of RainFlush systems for single, double storey and multiple connection applications. Check with your Nylex dealer for the right RainFlush system for your home.

Note: RainFlush systems can only be connected to homes with access to mains water and must be installed by a qualified plumber.



Source: Yarra Valley Water; Water Savers Handbook



If your tank is for external use only e.g. watering the garden, topping up the swimming pool, washing the car, boat or caravan, a Nylex PC3 pump cover is an attractive and practical way to protect your pump and control unit from the elements. PC3s are light-weight, strong and available in colours which match your Nylex tank - Beige, Merino, River Gum and Mist Green.



Nylex SLR3000* - capacity and style in one elegant tank

The **SLR3000** is the ultimate rainwater tank and the latest in ergonomic and industrial design, created specifically for the Australian market in dimensions that allow extra water storage where tight spaces prohibit most existing tank styles.

Quality and connectivity set this tank apart - 50mm outlets at both ends, four 20mm outlets (front and back and both ends), overflow points at each end and a choice of two water inlet points (wide for multiple downpipes).

Dimensions:

3010mm W x 700mm D x 2050mm H x 2063mm inlet H

Available colours include: Mist Green, Merino, Rivergum and Beige.

*Available early 2009 - check with your stockist.

